

**BLADE 5**

1 Green Bar + 1 Hilt Gem + 1 Blue Bar + 2 Hilt Gems + 1 Purple Bar + 3 Hilt Gems = 1 Blade

**BLADE 5**

1 Green Bar + 1 Hilt Gem + 1 Blue Bar + 2 Hilt Gems + 1 Purple Bar + 3 Hilt Gems = 1 Blade

**BLADE 5**

1 Green Bar + 1 Hilt Gem + 1 Blue Bar + 2 Hilt Gems + 1 Purple Bar + 3 Hilt Gems = 1 Blade

**BLADE 5**

1 Green Bar + 1 Hilt Gem + 1 Blue Bar + 2 Hilt Gems + 1 Purple Bar + 3 Hilt Gems = 1 Blade

**HILT GEM 2**

1 Green Bar + 1 Hilt Gem + 1 Blue Bar + 2 Hilt Gems + 1 Purple Bar + 3 Hilt Gems = 1 Hilt Gem

**HILT GEM 2**

1 Green Bar + 1 Hilt Gem + 1 Blue Bar + 2 Hilt Gems + 1 Purple Bar + 3 Hilt Gems = 1 Hilt Gem

**HILT GEM 2**

1 Green Bar + 1 Hilt Gem + 1 Blue Bar + 2 Hilt Gems + 1 Purple Bar + 3 Hilt Gems = 1 Hilt Gem

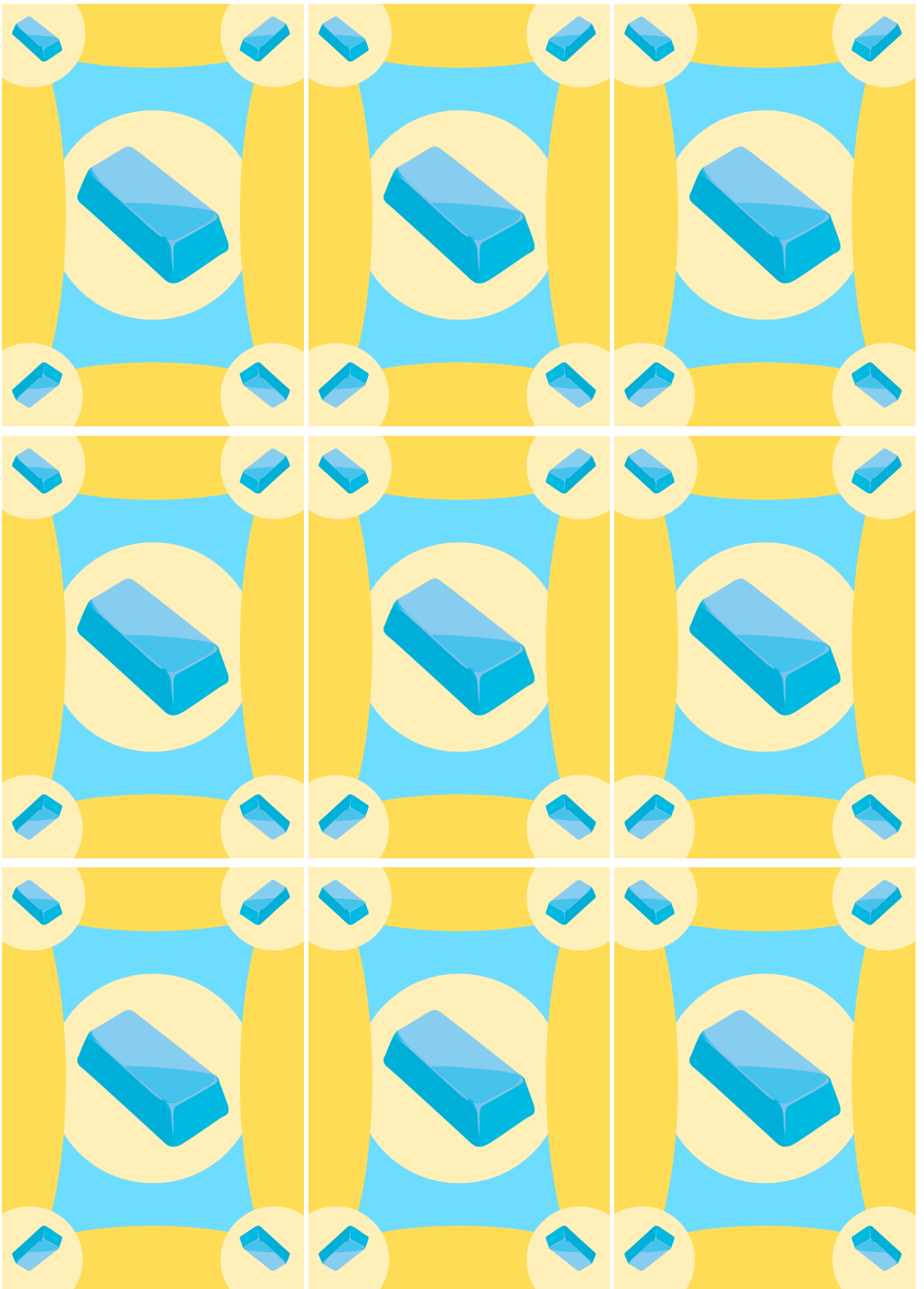
**HILT GEM 2**

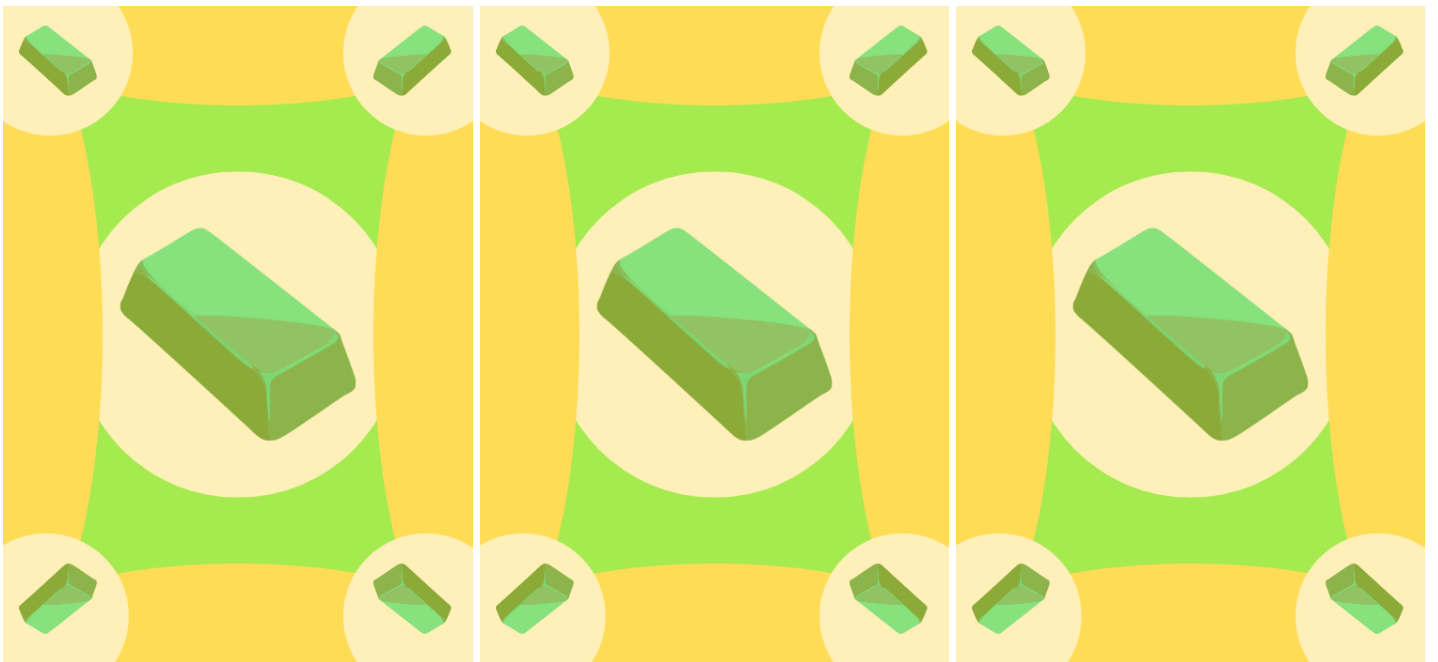
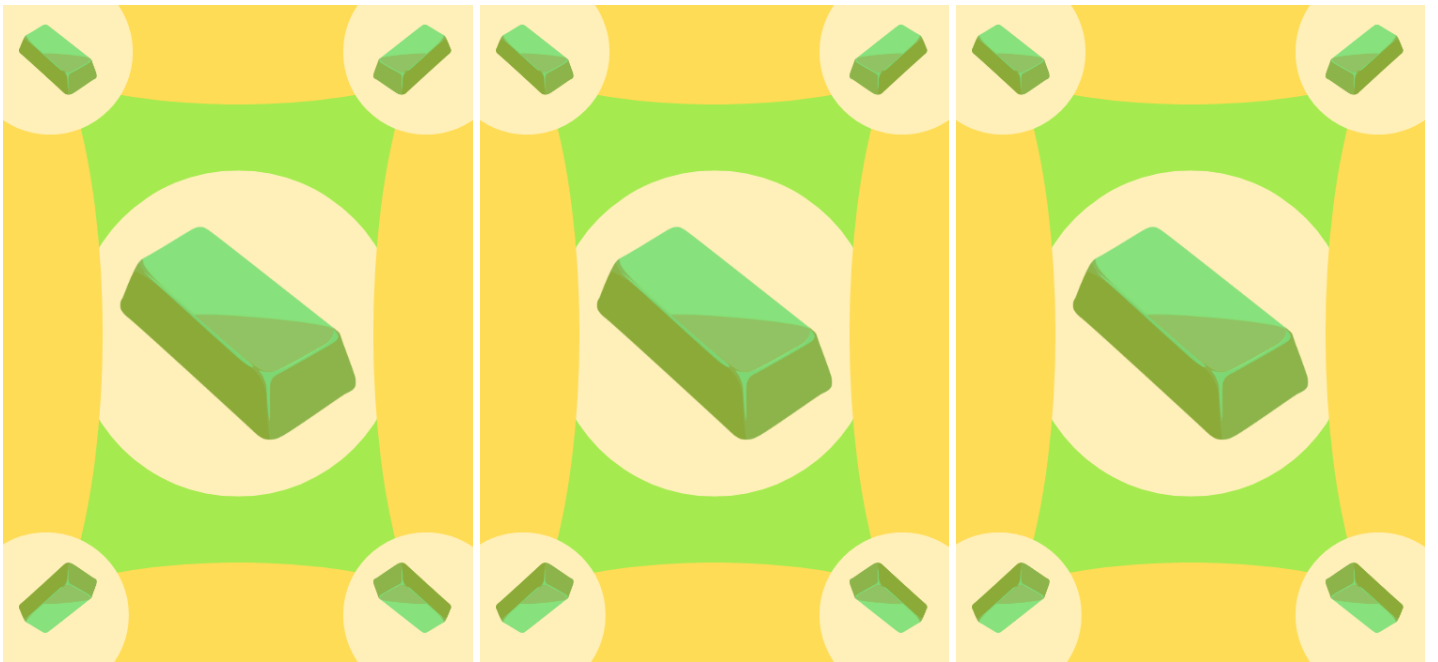
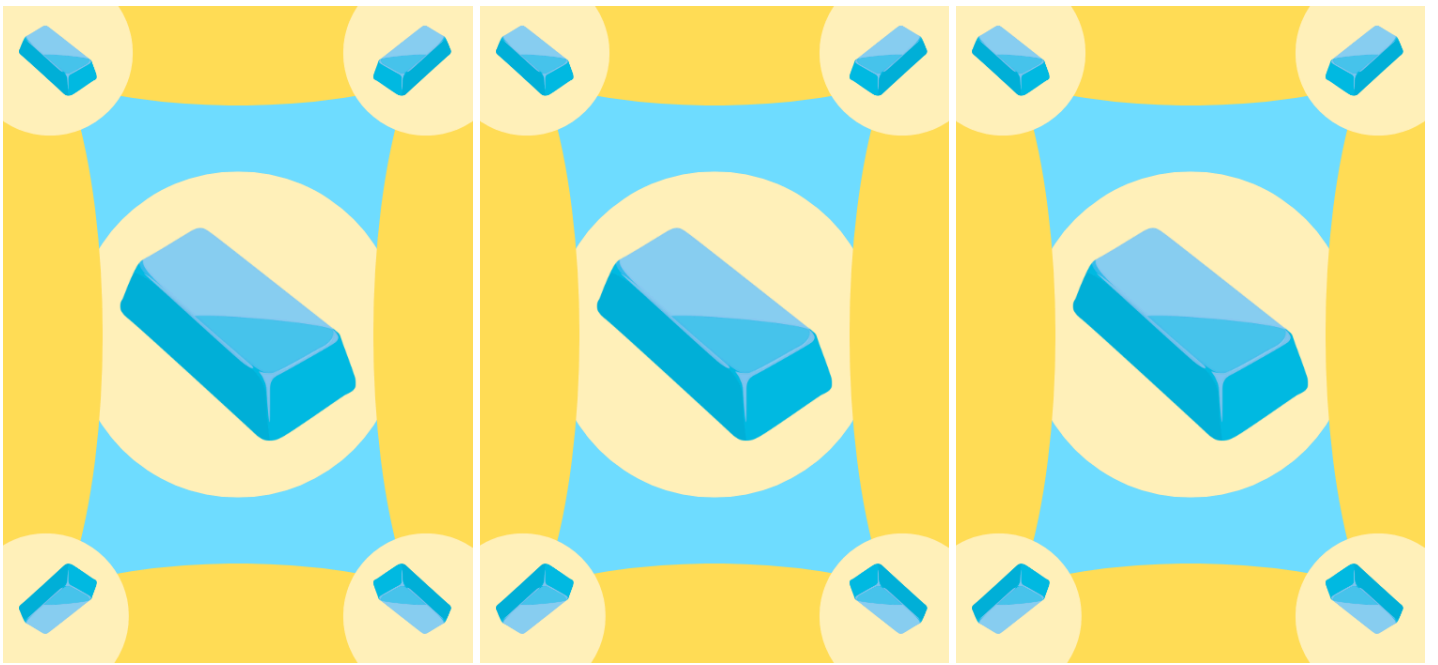
1 Green Bar + 1 Hilt Gem + 1 Blue Bar + 2 Hilt Gems + 1 Purple Bar + 3 Hilt Gems = 1 Hilt Gem

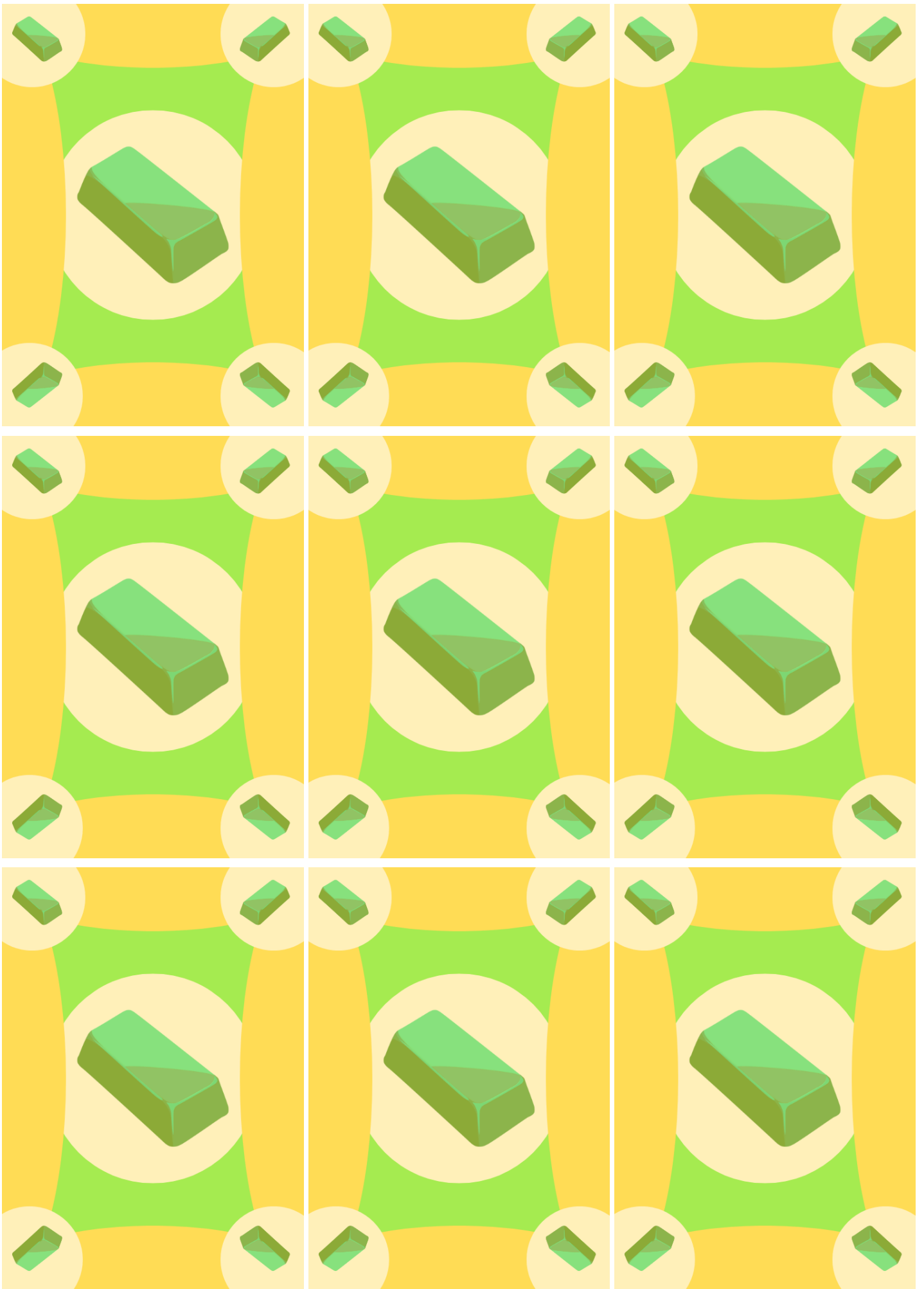
**HILT GEM 2**

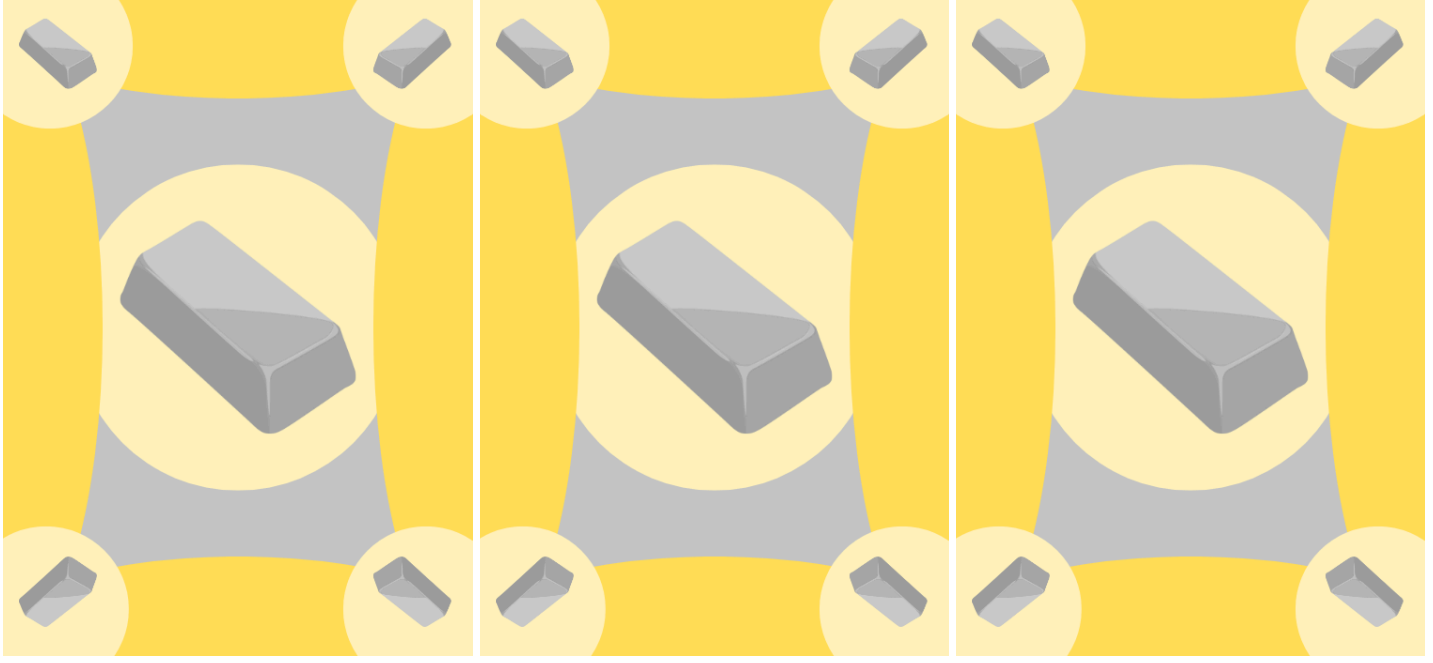
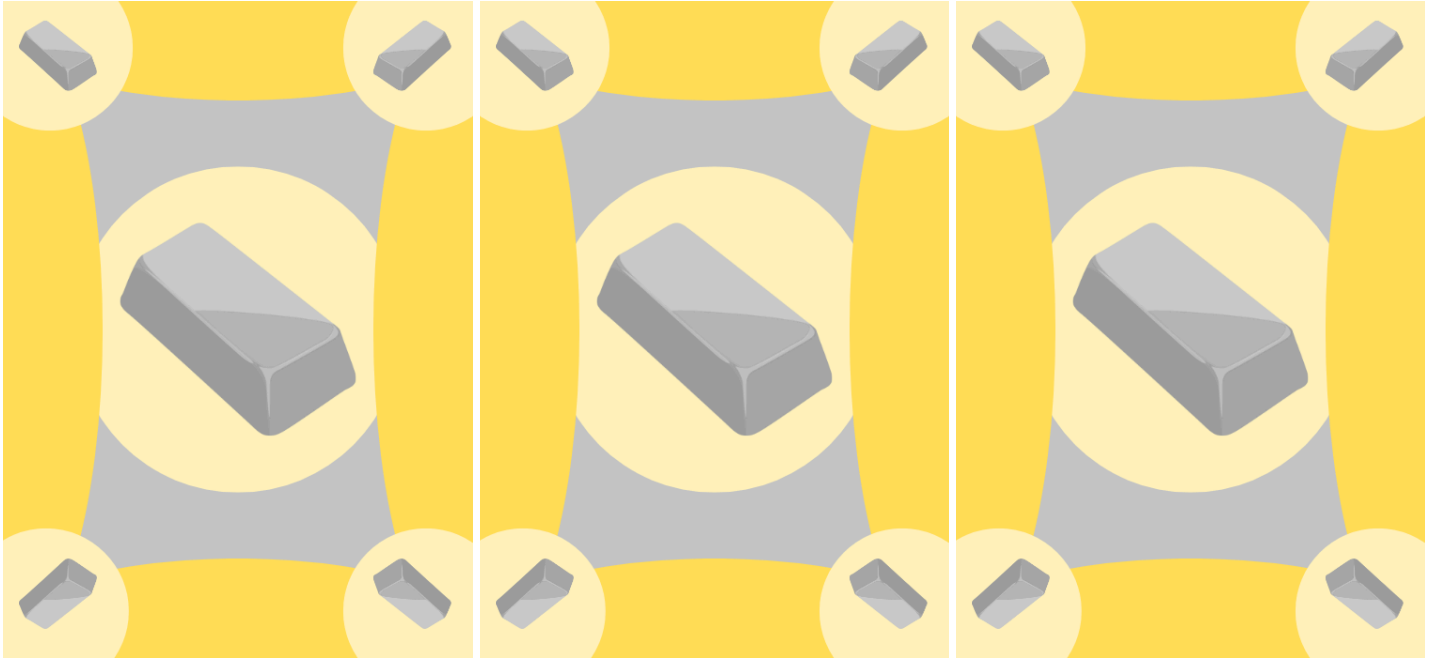
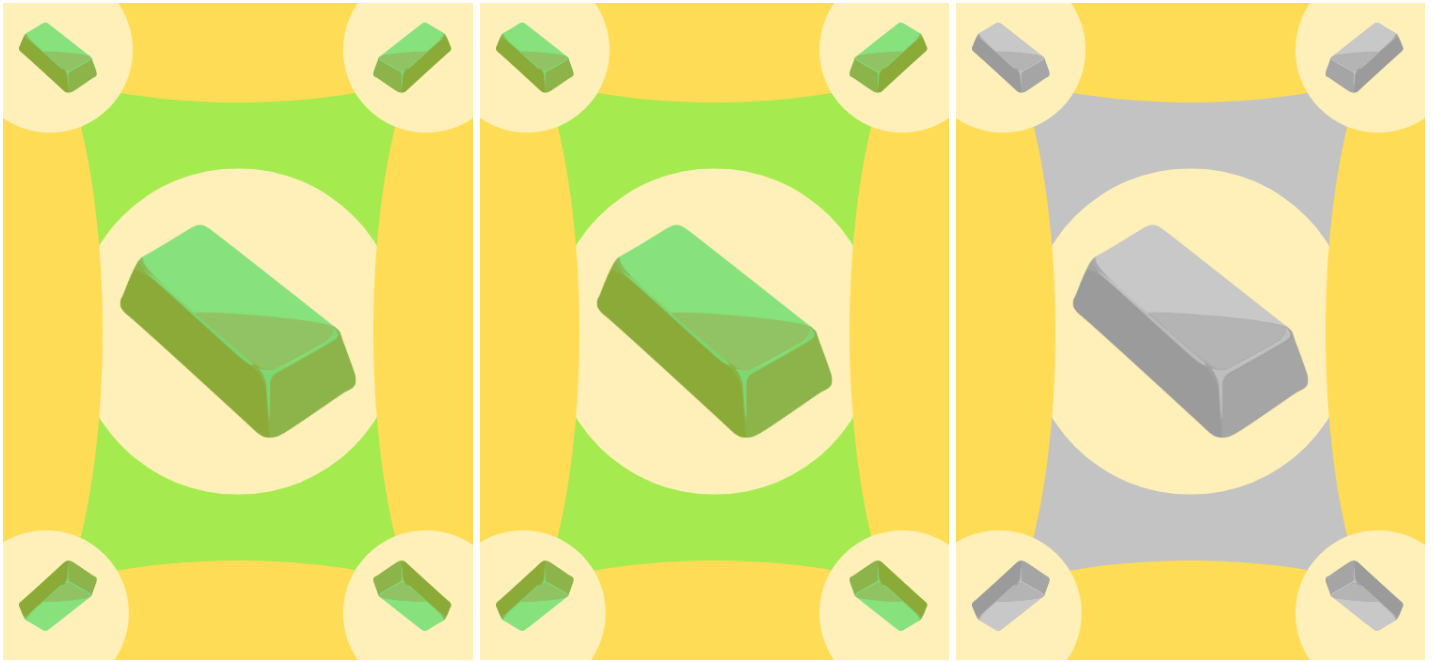
1 Green Bar + 1 Hilt Gem + 1 Blue Bar + 2 Hilt Gems + 1 Purple Bar + 3 Hilt Gems = 1 Hilt Gem

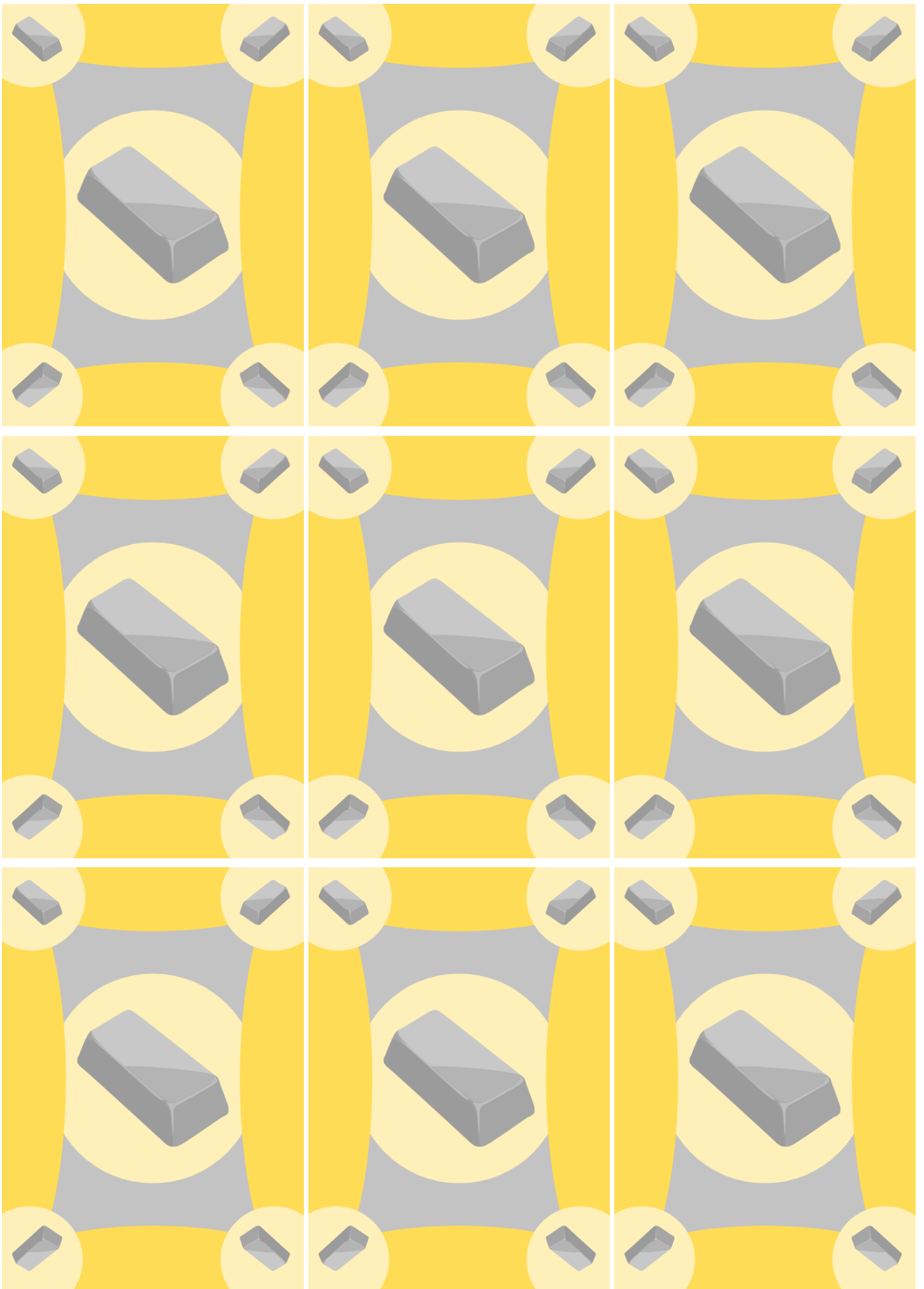


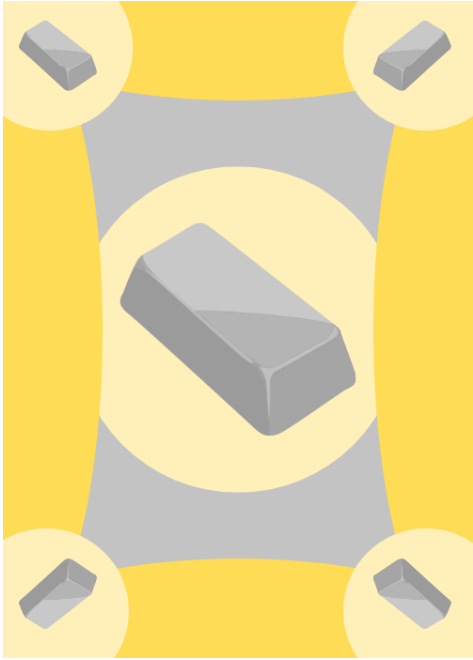
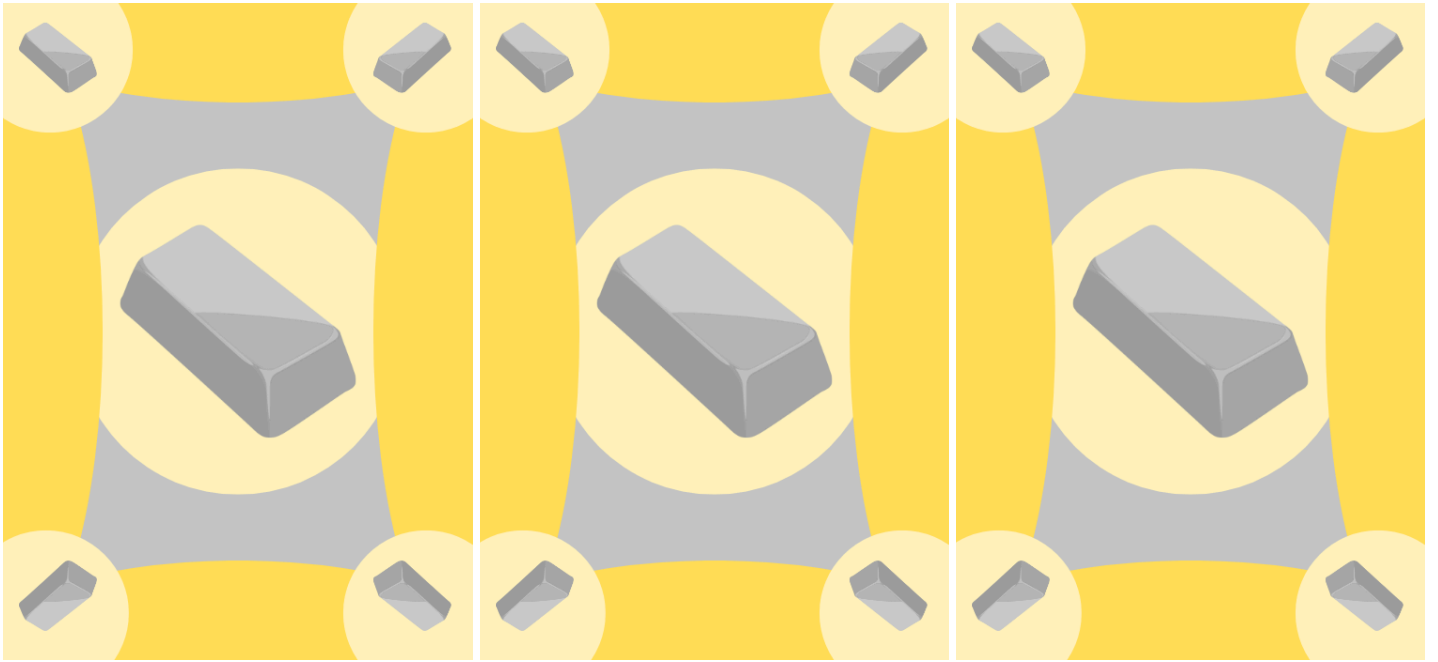














**SHORTSWORD HILT** **3**

IF YOUR BLADE HAS GAIN

IF YOUR BLADE HAS EVERY GAIN

DOUBLE THE VALUE OF YOUR BLADE CARD

**SHORTSWORD HILT** **3**

IF YOUR BLADE HAS GAIN

IF YOUR BLADE HAS EVERY GAIN

DOUBLE THE VALUE OF YOUR BLADE CARD

**KATANA HILT** **3**

YOU CAN ADD 2 TO ANOTHER PLAYER'S PER TURN

IF YOU CAUSE A PLAYER TO OVERFLOW, OVERFLOW 2

IF YOU CAUSE A PLAYER TO OVERFLOW TAKE THE OVERFLOW

**KATANA HILT** **3**

YOU CAN ADD 2 TO ANOTHER PLAYER'S PER TURN

IF YOU CAUSE A PLAYER TO OVERFLOW, OVERFLOW 2

IF YOU CAUSE A PLAYER TO OVERFLOW TAKE THE OVERFLOW

**LONGSWORD HILT** **3**

GAIN FOR EVERY COMPLETE CARD

YOU CAN ADD 2 TO YOUR PER TURN

YOUR CARDS CAN HOLD AN ADDITIONAL BEFORE THEY OVERFLOW

**LONGSWORD HILT** **3**

GAIN FOR EVERY COMPLETE CARD

YOU CAN ADD 2 TO YOUR PER TURN

YOUR CARDS CAN HOLD AN ADDITIONAL BEFORE THEY OVERFLOW

**BLADE SPIKES** **5**

EVERY  IN THIS CARD IS WORTH 

 + 

 +  

**+**

**KNUCKLE GUARD** **3**



 MAX CARDS IN STORAGE +1




 MAX CARDS IN STORAGE +2



 EVERY CARD IN YOUR STORAGE IS WORTH  AT THE END OF THE GAME

**+**

**TRIPLE BLADE** **4**


 + 


 +  




 DOUBLE THE  VALUES ON THIS CARD

**+**

**BLADE HOOK** **3**

YOU CAN TAKE  RANDOMLY FROM SOMEONE'S STORAGE INSTEAD OF THE MINE

YOU CAN DISCARD  FROM YOUR STORAGE (WITHOUT USING AN ACTION)

 +  

**+**

**BLADE WAVE** **3**

YOU CAN RESTOCK THE MARKET AND TAKE A CARD FROM IT IN 1 TURN

 +  

 GAIN  FOR EVERY COMPLETE CARD

**+**

**TWO-SIDED SWORD** **4**




GAIN  FOR EVERY 2 CARDS WITH 




GAIN  FOR EVERY CARD WITH 





GAIN  FOR EVERY CARD WITH 

**+**

**THICK BLADE** **4**

 +  

 +  

 +   

**+**

